

## Rolled Rubber Mats

PSS-018-Rubber-01

### PROVIDE COMFORT AND CONFIDENCE

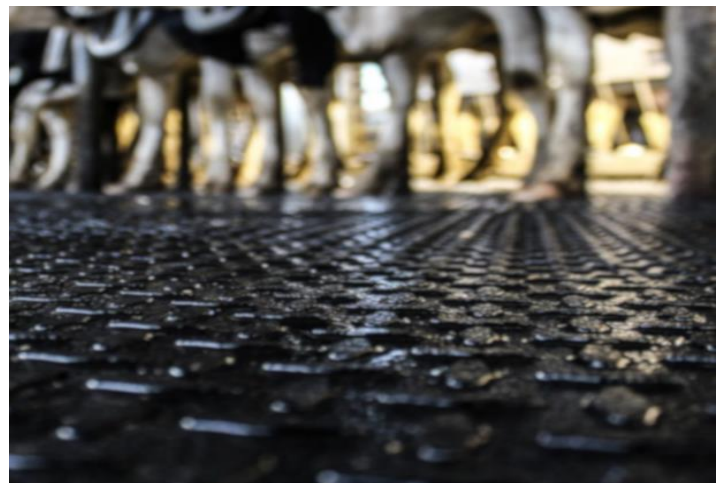
Concrete floors are known to increase lameness rates, but they also create dangerous, slippery surface that increases the risk of other injuries.

Studies have shown that cows on rubber alley floors had drastically lower lameness rates than those on concrete.

VES-Artex Rolled Rubber Mats have been rigorously tested and are a strong, hard, abrasion-resistant solution for any facility.

#### BENEFITS

- Decreases incidences of lameness than with concrete
- Studies have shown that softer flooring has shown improved locomotion in both lame and non-lame cows
- Cows walk more securely with longer and higher strides at greater speeds on rubber versus concrete
- Reducing incidences of lameness will directly effect your bottom line by reducing costly vet costs and reducing labor needed to treat animals



#### FEATURES

- Lengths up to 150' without a seam
- Widths from 1' to 6.5'
- Thicknesses of 5/8" to 3/4"
- Available with or without mesh scrim
- Non-absorbent and bacteria resistant
- Designed specifically for the dairy industry
- UV inhibitor to protect from sun exposure
- Rubber backing available in ribbed or flat back
- Available with hammer tone top to prevent cow slippage

Part #	Thickness	Back of Rubber	Wt. Per Sqft	Scrim
105240	5/8"	Ribbed	3.76	No
105240				Yes

Physical Spec	VES Compound	Taber Abrasion (g)	0.18
Hardness(duro)	66	After Hot Air Aging Test	100Cx22 hours
Tensile Strength	770	Hardness Change (duro)	4
Elongation(%)	224%	Aging Co-Efficient	0.98
Compression Set (%)	8%	Tensile Strength Change (5)	5%
Specific Gravity (g/cm3)	1.24		
Taber Abrasion (mm3)	142	Elongation Change %	-3%