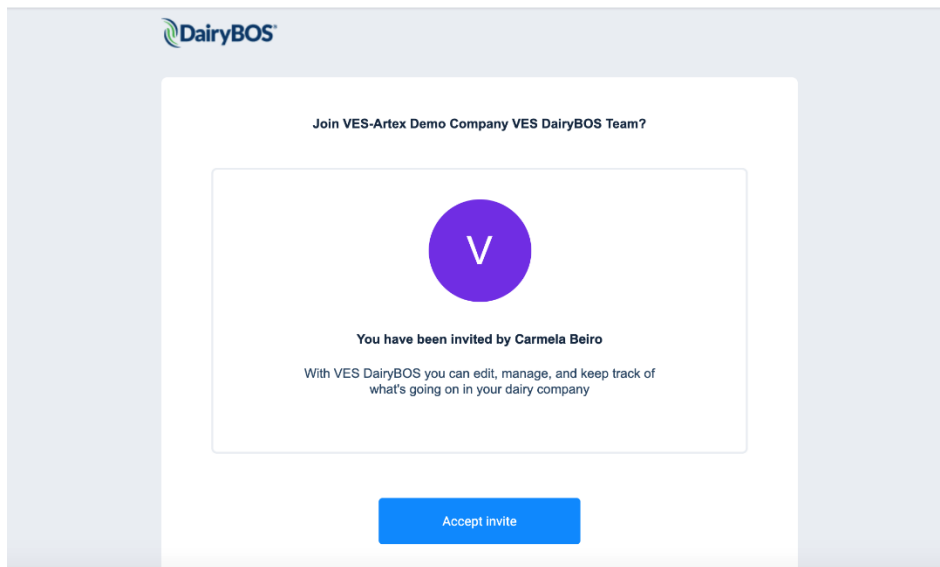


## VES-Artex® DairyBOS® Dashboard Quick Start Guide

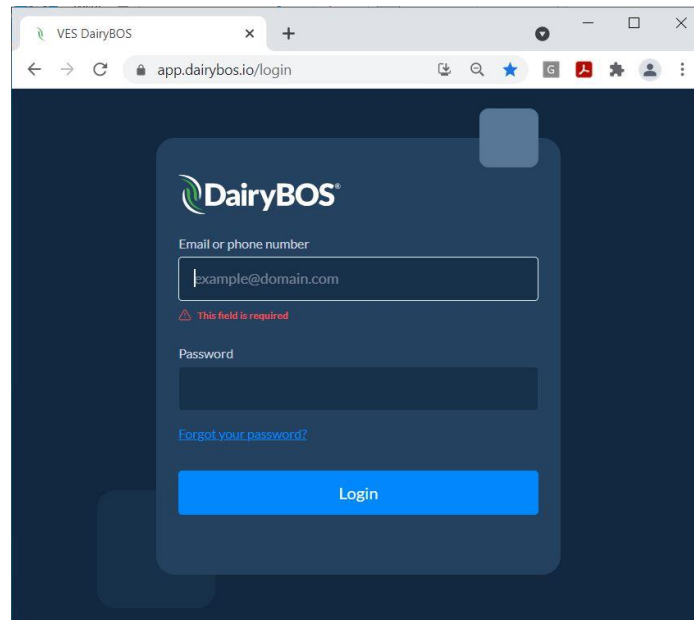
1. You will receive an invitation by email to join your company on DairyBOS. Click on the link in the email to go to the account setup page.



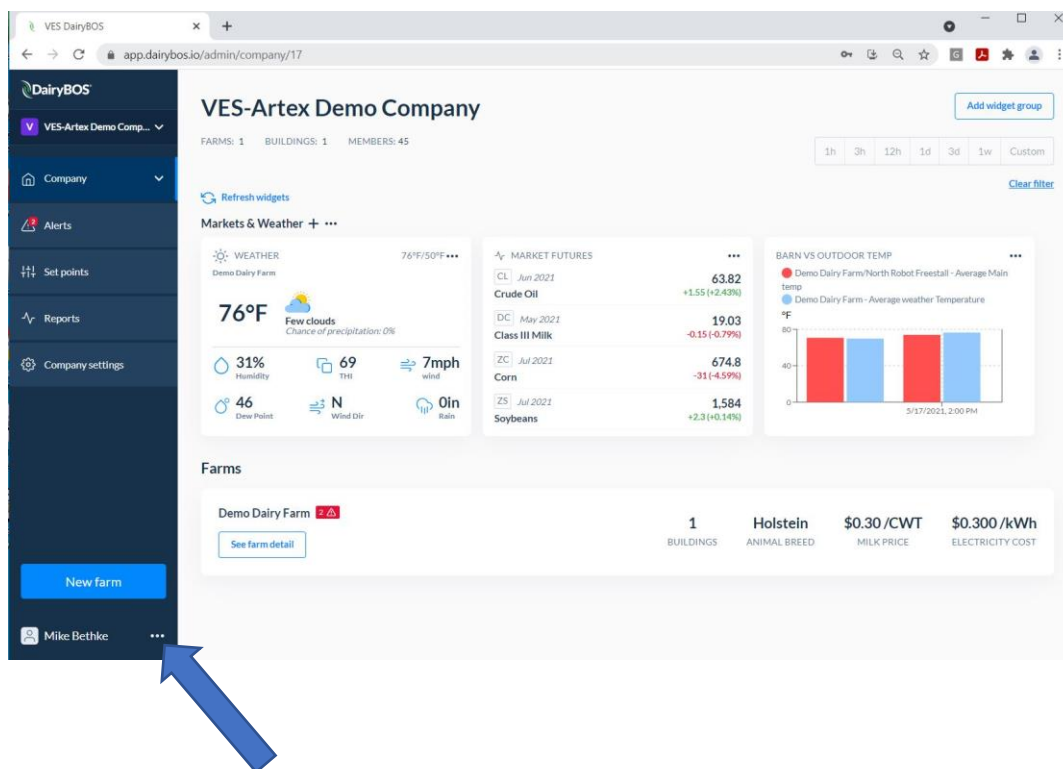
2. Enter the requested information to set up your personal account.

A screenshot of the DairyBOS account setup page. The page has a dark blue background. In the top right corner, there is a language dropdown menu set to "English (US)". On the left, it says "Welcome to DairyBOS". The main heading is "Complete your personal information". Below this are several input fields: "Name", "Last name", "Mobile number" (with a dropdown for country code showing "+1"), "Password", and "Confirm password". At the bottom, there is a checkbox labeled "Accept" followed by a link to "VES Terms & Privacy Policy".

3. After your account is set up access your dashboard by navigating to <https://app.dairybos.io> using your preferred web browser.



4. You will be directed to the main page of your DairyBOS dashboard. Select the 3 dots next to your username to go to your profile page. Here you can update your personal information and reset your password. This is also where you would set preferences such as language, units of measure, and whether you prefer to receive alerts by email or text.



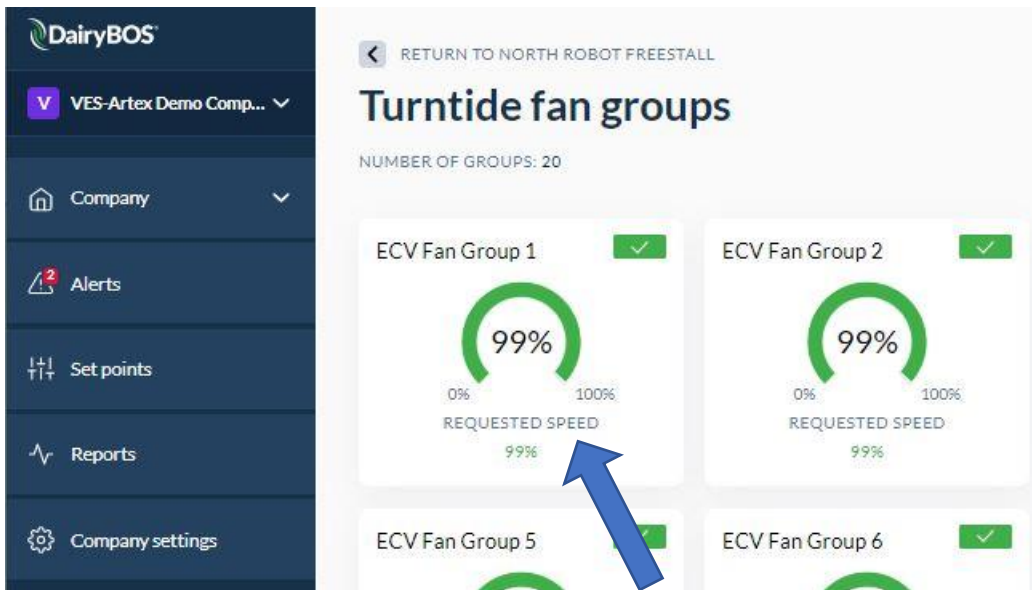
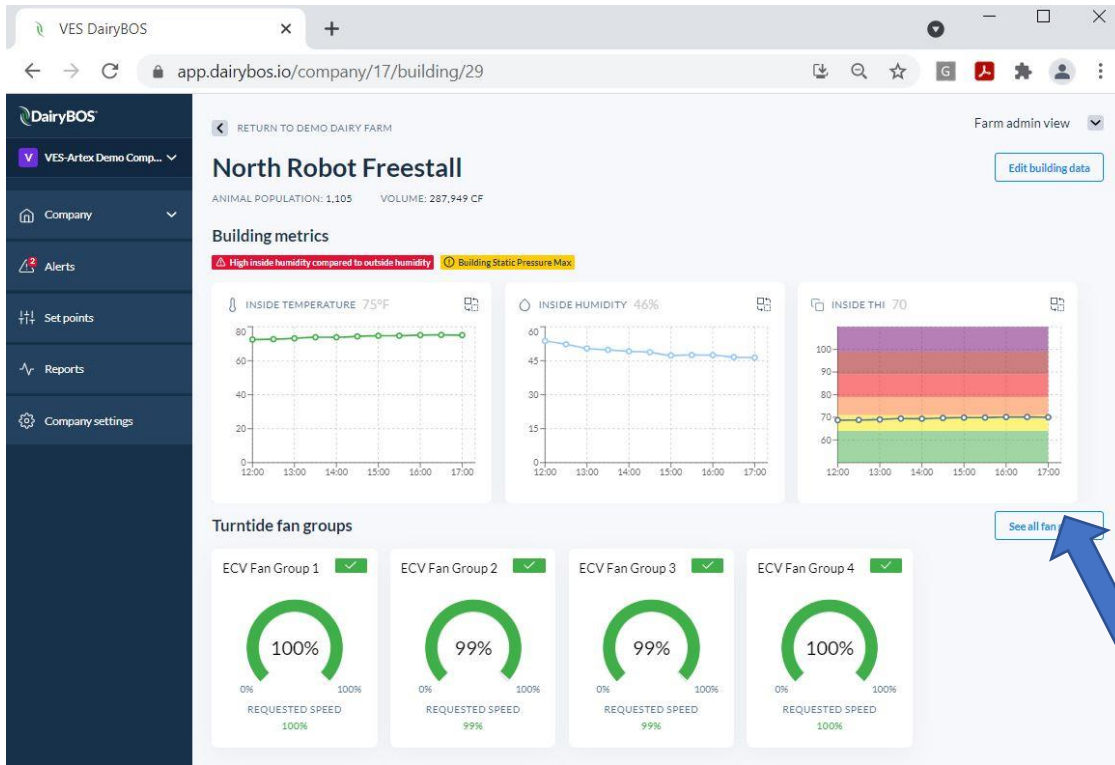
5. Select Farm you wish to access

The screenshot shows the DairyBOS interface for 'VES-Artex Demo Company'. The left sidebar contains navigation options: Company, Alerts, Set points, Reports, and Company settings. The main content area is titled 'VES-Artex Demo Company' and includes a 'Refresh widgets' button. Below this, there are three widget groups: 'Markets & Weather', 'MARKET FUTURES', and 'BARN VS OUTDOOR TEMP'. The 'Markets & Weather' widget displays weather for 'Demo Dairy Farm' with a temperature of 76°F, 31% humidity, 69 THI, 7mph wind, 46 Dew Point, and 0in Rain. The 'MARKET FUTURES' widget lists prices for Crude Oil (63.82), Class III Milk (19.03), Corn (674.8), and Soybeans (1,584). The 'BARN VS OUTDOOR TEMP' widget shows a bar chart comparing barn and outdoor temperatures. At the bottom, the 'Farms' section lists 'Demo Dairy Farm' with 1 building, Holstein animal breed, \$0.30/CWT milk price, and \$0.300/kWh electricity cost. A blue arrow points to the 'Demo Dairy Farm' entry.

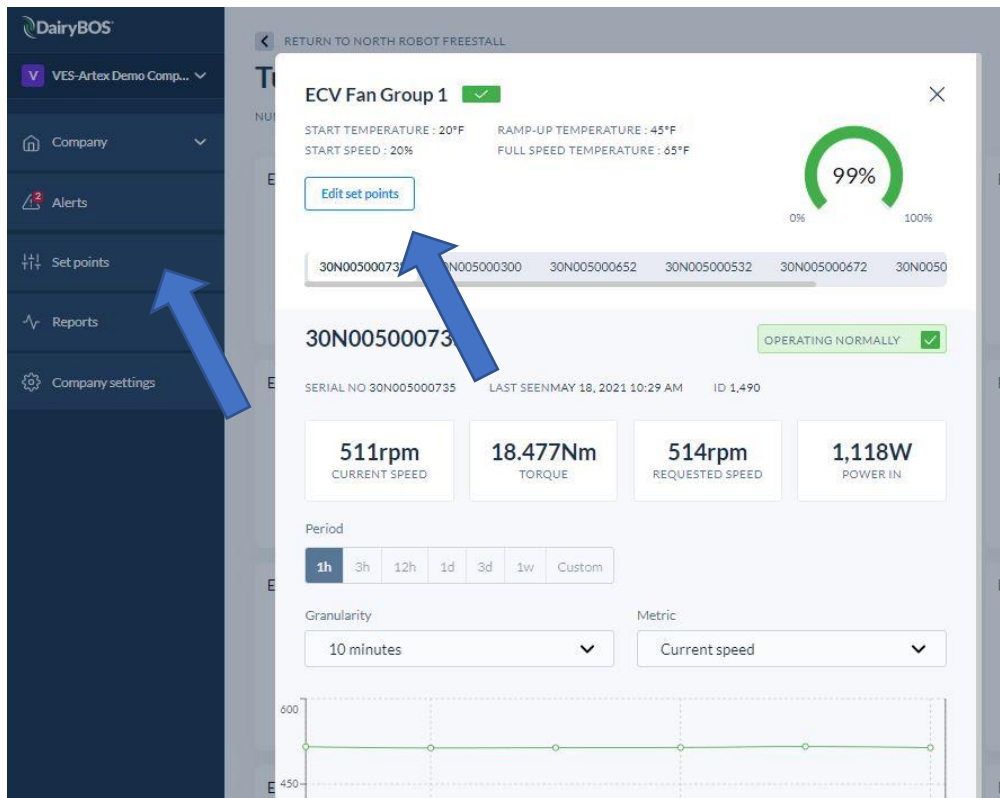
6. Select the Buildings list button to list your buildings. Select the building you would like to view.

The screenshot shows the DairyBOS interface for 'Demo Dairy Farm'. The left sidebar is the same as in the previous screenshot. The main content area is titled 'Demo Dairy Farm' and includes a 'RETURN TO VES-ARTEX DEMO COMPANY' button. Below this, there are three tabs: 'Farm widgets', 'Buildings list', and 'Edit farm information'. The 'Buildings list' tab is selected and highlighted with a blue arrow. Below the tabs, the 'Buildings' section lists 'North Robot Freestall' with a temperature of 75°F and 46% humidity. A blue arrow points to the 'North Robot Freestall' entry.

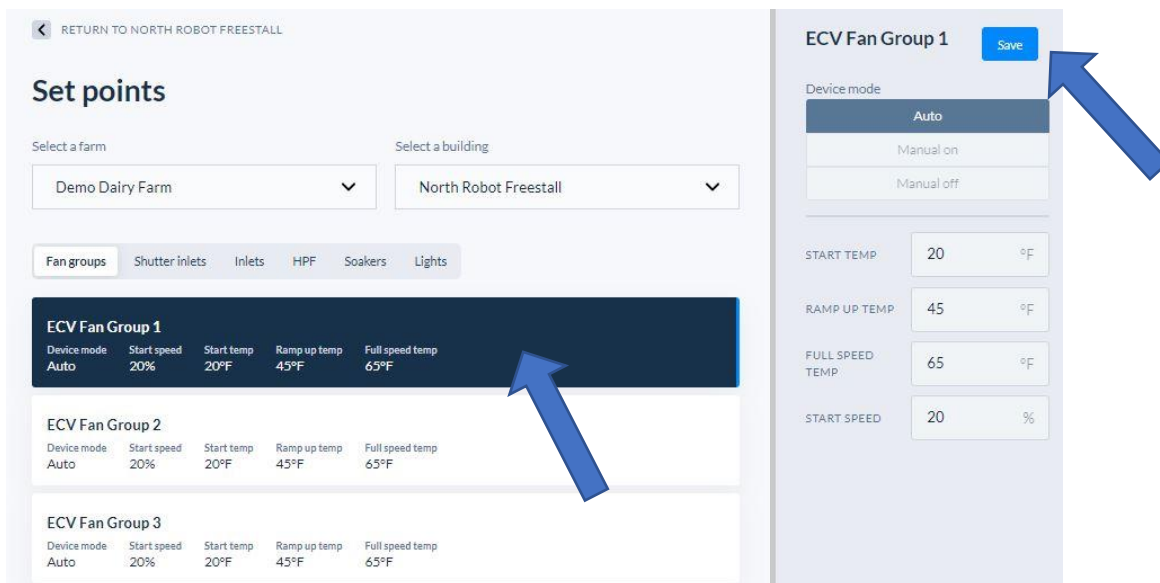
- The Building page shows building conditions and equipment groups. Select [See all fan groups](#) to view all groups of an equipment type. From there select a group to access individual equipment status and group set points.



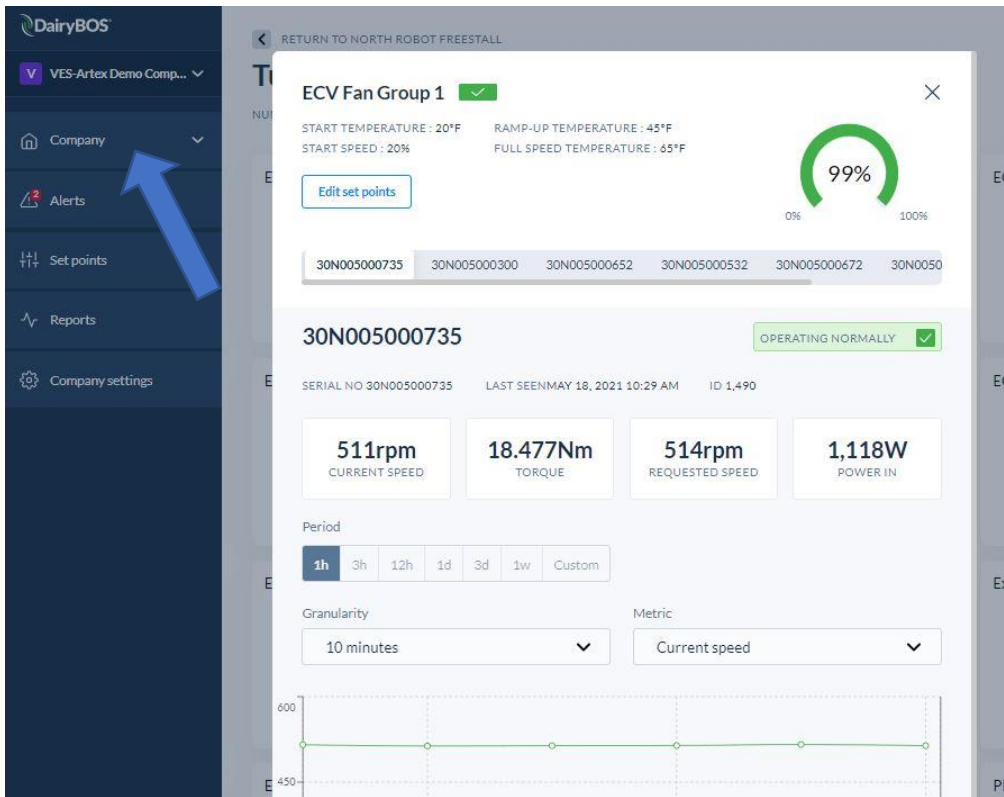
8. To access equipment group set points select the [Edit set points](#) button in the equipment group or select [Set points](#) in main menu.



9. Select an individual equipment group to view and update its settings. After entering updated settings select [Save](#).



10. To return to main screen from any menu, select the **Company** button in main menu.



*Thank you for installing DairyBOS®. Your system is now operational and set up with basic functionality. For setup of advanced functions or configurations, please review the complete user manual.*