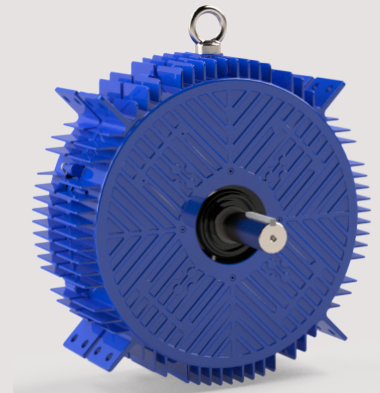




# Smart, Reliable, Intelligent

## The TX Motor Series

PSS-035-TX-01



**POWERED BY:**  **TURNTIDE®**

The next evolution of Smart Motor is here. The Turntide TX motor is designed to offer the highest performance, reliability, and efficiency possible.

This direct drive motor minimizes maintenance and offers reliable, long-term performance year-round.

Speak with a VES representative to learn more.



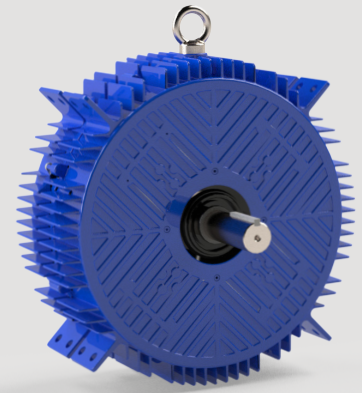
### BENEFITS

- TX motor-driven fans ensure high efficiency over a wide range of operating speeds, making them perfect for variable speed applications, giving you ultimate control over your environment
- The TX Motor fully integrates with the Turntide Intelligent Barn™ system powered by DairyBOS®. Take control over your facility anytime, anywhere with the Intelligent Barn
- This heavy-duty motor is corrosion-resistant and has a longer life span and its switch reluctance design provides for more durability than AC induction motors
- Turntide has designed this Smart Motor with improved sound quality for a comfortable environment for your staff and animals.



# The TX Motor Series

## 72" AFRV TX4 Series Specs and Performance



Part Number	Description	Hz	Opr. Lvl	HP	V	PH	Full Load AMPs	RPM	CFM/ 0" SP	CFM/w	CFM/ .05" SP	CFM/w	CFM/ .10" SP	CFM/w	CFM/ .15" SP	CFM/w
105769	AFRV 72 TX2 6 Nylon Blades w/Intake Guard	50/60	100	3.3	208-230	3	7.2-6.6	345-346	45,967	27.89	43,759	24.66	41,257	21.80	38,699	19.46
			90					311-312	41,462	34.02	39,042	29.61	36,186	25.41	33,002	22.01
			50					173	22,962	96.28	18,078	62.97	6,975	23.82	N/A	N/A
105771	AFRV 72 TX4 6 Nylon Blades w/Intake Guard		100		400-460		4.7-4.3	345-346	45,967	27.89	43,759	24.66	41,257	21.80	38,699	19.46
			90					311-312	41,462	34.02	39,042	29.61	36,186	25.41	33,002	22.01
			50					173	22,962	96.28	18,078	62.97	6,975	23.82	N/A	N/A
105598	AFRV 72 TX2 6 Nylon Blades w/Intake New Shutter Design		100		208-230		7.2-6.6	345-346	43,946	25.91	41,522	22.87	38,364	19.82	34,978	17.29
			90					311-312	38,837	30.48	35,767	25.97	31,995	21.82	27,482	18.19
			50					174	16,815	60.16	10,232	33.11	1,451	4.29	N/A	N/A
105600	AFRV 72 TX4 6 Nylon Blades w/Intake New Shutter Design	100	400-460	4.7-4.3	345-346	43,946	25.91	41,522	22.87	38,364	19.82	34,978	17.29			
		90			311-312	38,837	30.48	35,767	25.97	31,995	21.82	27,482	18.19			
		50			174	16,815	60.16	10,232	33.11	1,451	4.29	N/A	N/A			

Part Number	Description	Hz	Opr. Lvl	HP	V	PH	Full Load AMPs	RPM	M <sup>3</sup> /H 0" SP	M <sup>3</sup> /H /w	M <sup>3</sup> /H .05" SP	M <sup>3</sup> /H /w	M <sup>3</sup> /H .10" SP	M <sup>3</sup> /H /w	M <sup>3</sup> /H .15" SP	M <sup>3</sup> /H /w
105769	AFRV 72 TX 6 Nylon Blades w/Intake Guard	50/60	100	3.3	208-230	3	7.2-6.6	345-346	78,098	47.38	74,347	41.89	70,096	37.04	65,750	33.06
			90					311-312	70,445	57.80	66,334	50.30	61,481	43.17	56,070	37.40
			50					173	39,013	163.58	30,715	106.98	11,951	40.48	N/A	N/A
105771	AFRV 72 TX 6 Nylon Blades w/Intake Guard		100		400-460		4.7-4.3	345-346	78,098	47.38	74,347	41.89	70,096	37.04	65,750	33.06
			90					311-312	70,445	57.80	66,334	50.30	61,481	43.17	56,070	37.40
			50					173	39,013	163.58	30,715	106.98	11,951	40.48	N/A	N/A
105598	AFRV 72 TX 6 Nylon Blades w/Intake New Shutter Design		100		208-230		7.2-6.6	345-346	74,664	44.02	70,546	38.86	65,182	33.68	59,429	29.38
			90					311-312	65,984	51.78	60,768	44.13	54,360	37.07	46,692	30.90
			50					174	28,570	102.22	17,384	56.26	2,466	7.29	N/A	N/A
105600	AFRV 72 TX 6 Nylon Blades w/Intake New Shutter Design	100	400-460	4.7-4.3	345-346	74,664	44.02	70,546	38.86	65,182	33.68	59,429	29.38			
		90			311-312	65,984	51.78	60,768	44.13	54,360	37.07	46,692	30.90			
		50			174	28,570	102.22	17,384	56.26	2,466	7.29	N/A	N/A			

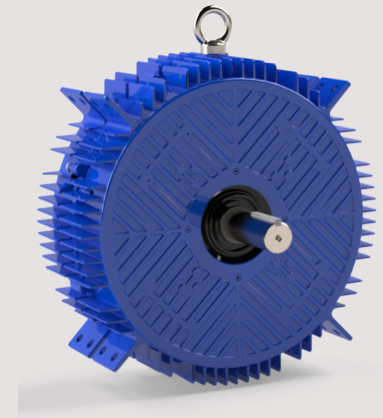


\*Data is based on testing performed by an independent lab using AMCA 210 and AMCA 230 standards, some values are calculated values. VES continues to strive for the most accurate test data available. As additional accredited lab results become available we will update the information stated. **Questions? Call 715-720-0800.**

# TX2 & TX4 Motor Series

## 72" ECV and PPF

### Specs and Performance



## 72" ECV TX Motor Series

Part Number	Description	Hz	Opr. Lvl	HP	V	PH	Full Load AMPs	RPM	Thrust (lbf)	Power Consumption (kWatts)	Thrust Efficiency (lbf/kW)	Airflow (CFM)
105602	ECVD72 TX Motor with 4 nylon blades, deflectors and turbo cone	50/60	100	3.3	208-230	3	7.2-6.6	420	52.00	2.20	23.64	46833
			95					406	47.68	1.98	24.04	45484
			50					226	14.42	3.69	39.03	25015
105604	ECVD72 TX Motor with 4 nylon blades, deflectors and turbo cone	50/60	100	3.3	400-460	3	4.7-4.3	420	52.00	2.20	23.64	46833
			95					406	47.68	1.98	24.04	45484
			50					226	14.42	3.69	39.03	25015

## 72" PPF TX Motor Series

Part Number	Description	Hz	Opr. Lvl	HP	V	PH	Full Load AMPs	RPM	CFM/ 0" SP	CFM/w	M <sup>3</sup> /H 0" SP	M <sup>3</sup> /H /w
105606	PPFD72 TX Motor with 4 nylon blades, Acuated Shutter and square guard	50/60	100	3.3	208-230	3	7.2-6.6	420	40900	18.8	69500	32.0
			90					380	35600	21.9	60500	37.3
			50					210	13400	39.8	22800	67.7
105608	PPFD72 TX Motor with 4 nylon blades, Acuated Shutter and square guard	50/60	100	3.3	400-460	3	4.7-4.3	420	40900	18.8	69500	32.0
			90					380	35600	21.9	60500	37.3
			50					210	13400	39.8	22800	67.7



\*Data is based on testing performed by an independent lab using AMCA 210 and AMCA 230 standards, some values are calculated values. VES continues to strive for the most accurate test data available. As additional accredited lab results become available we will update the information stated. **Questions? Call 715-720-0800.**